



Appendix E - Maps for Updates to Redband Trout Use

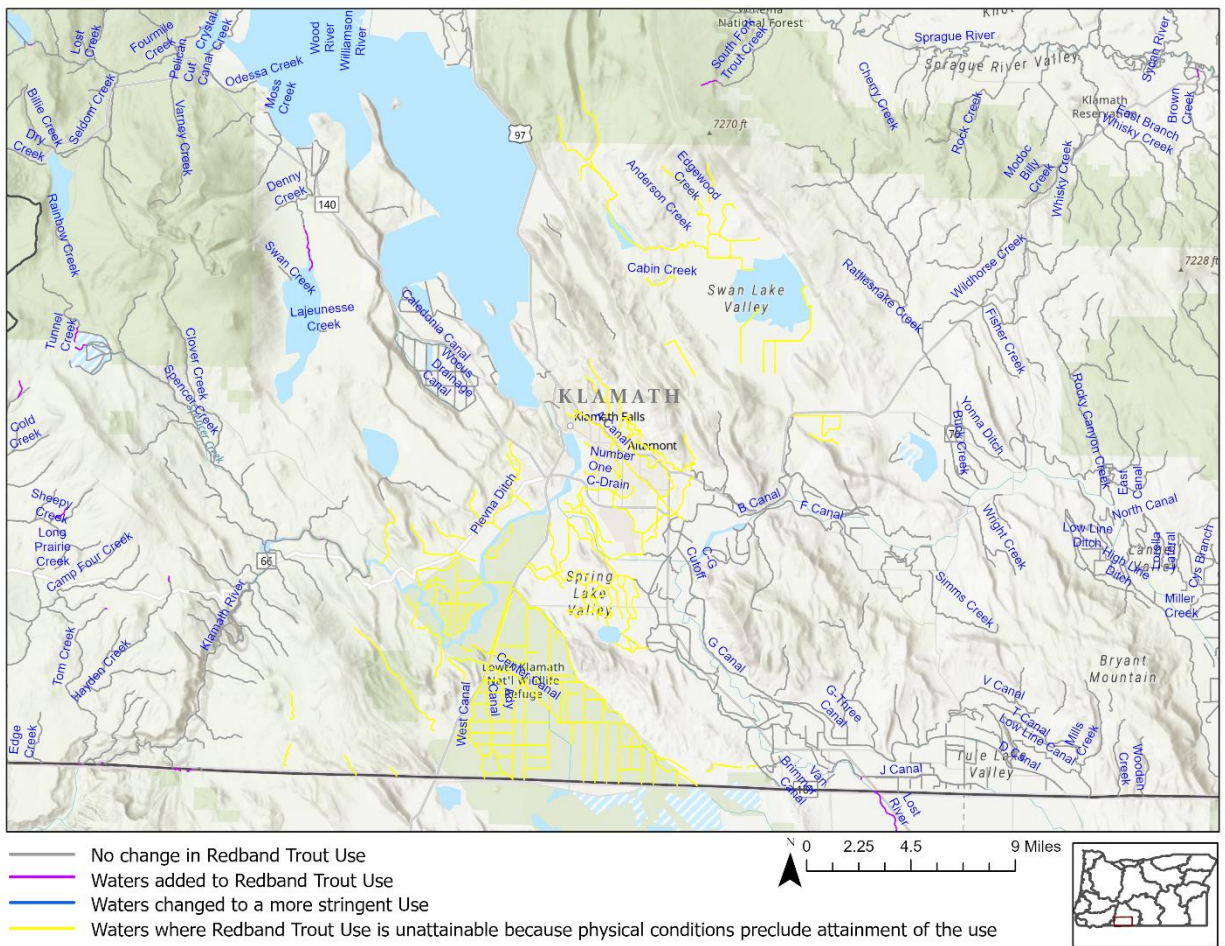


Figure E-1. Waters where Redband Trout Use is unattainable due to physical conditions, Klamath River Basin.

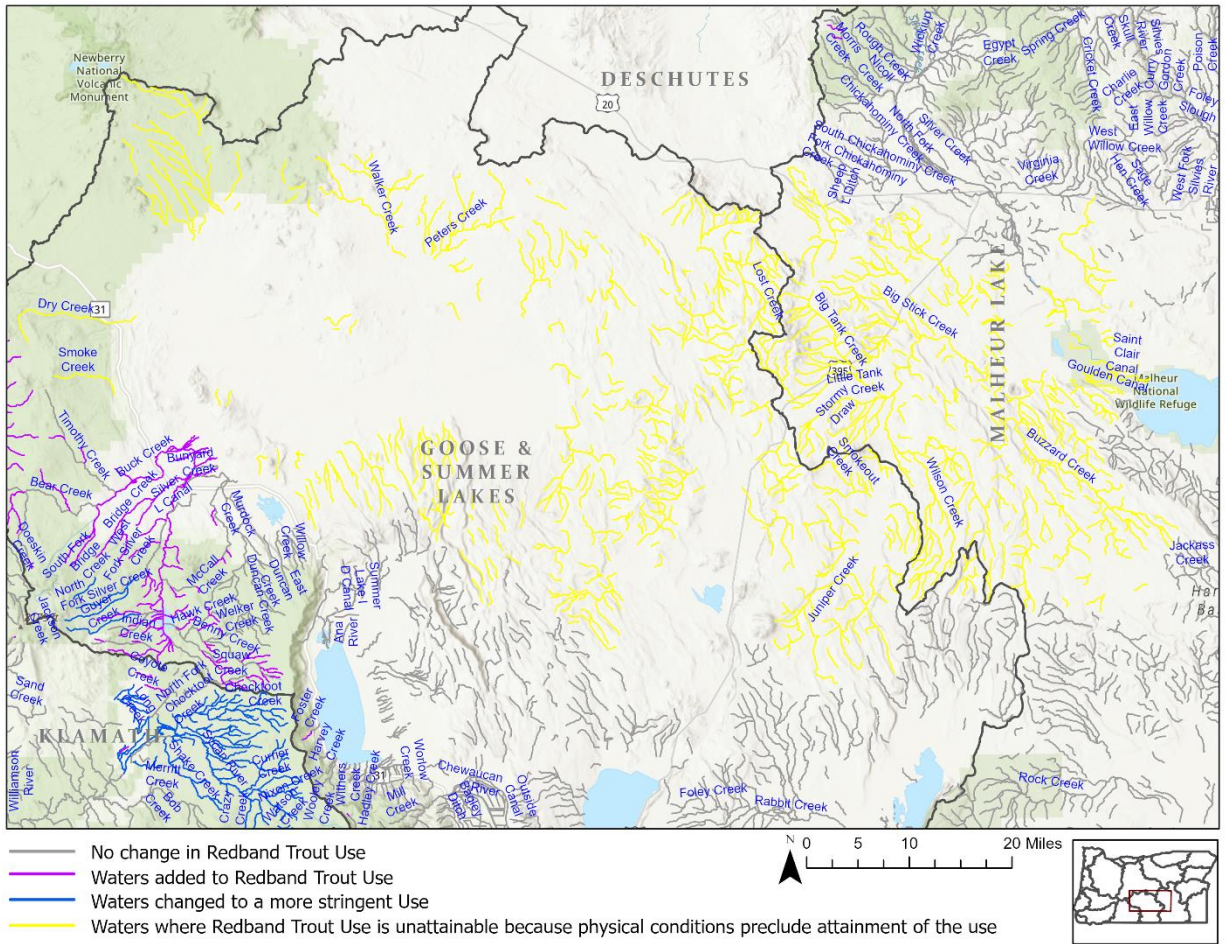


Figure E-2. Waters where Redband Trout Use is unattainable due to physical conditions, Goose and Summer Lakes and Northern Malheur Lakes Basin.

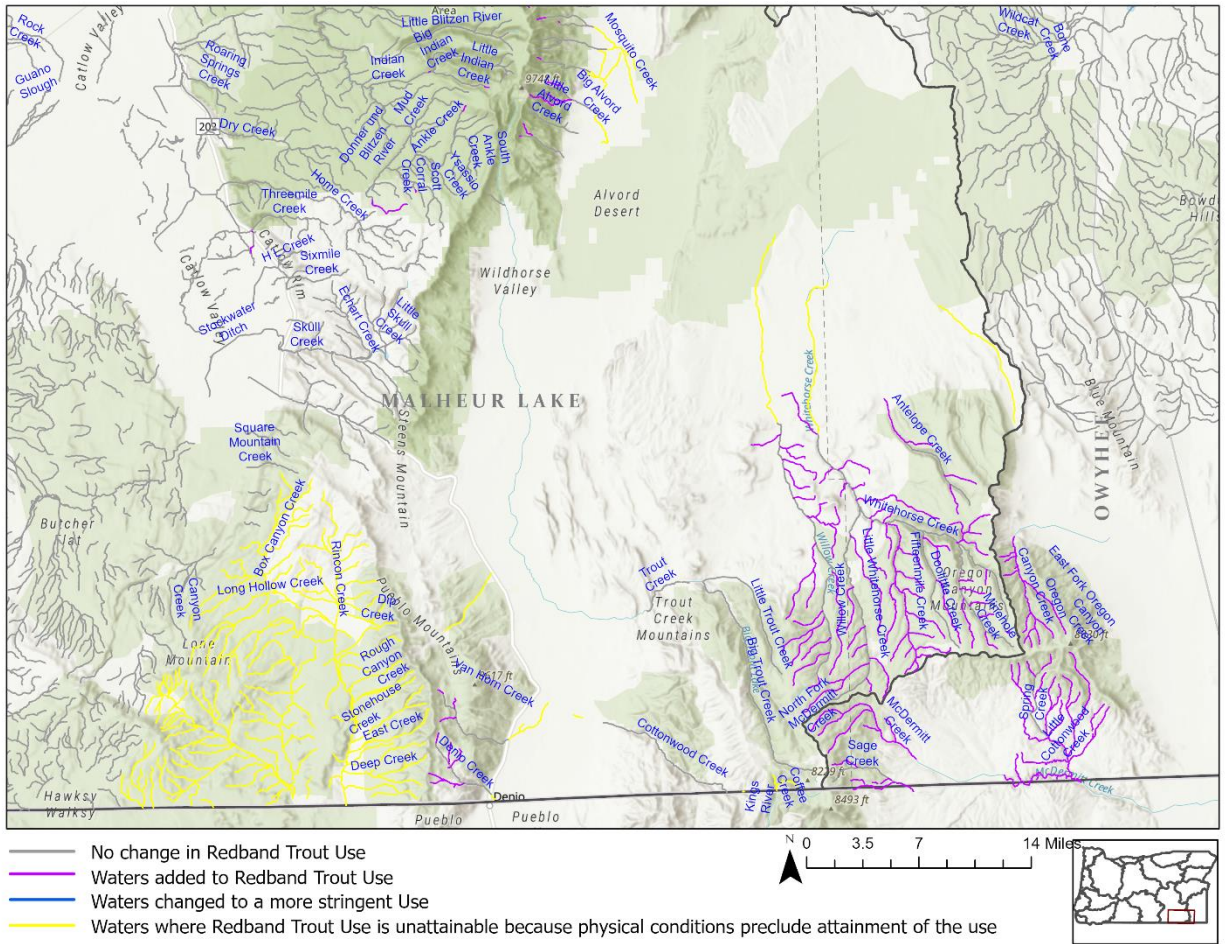


Figure E-3. Waters where Redband Trout Use is unattainable due to physical conditions, Southern Malheur Lakes Basin.

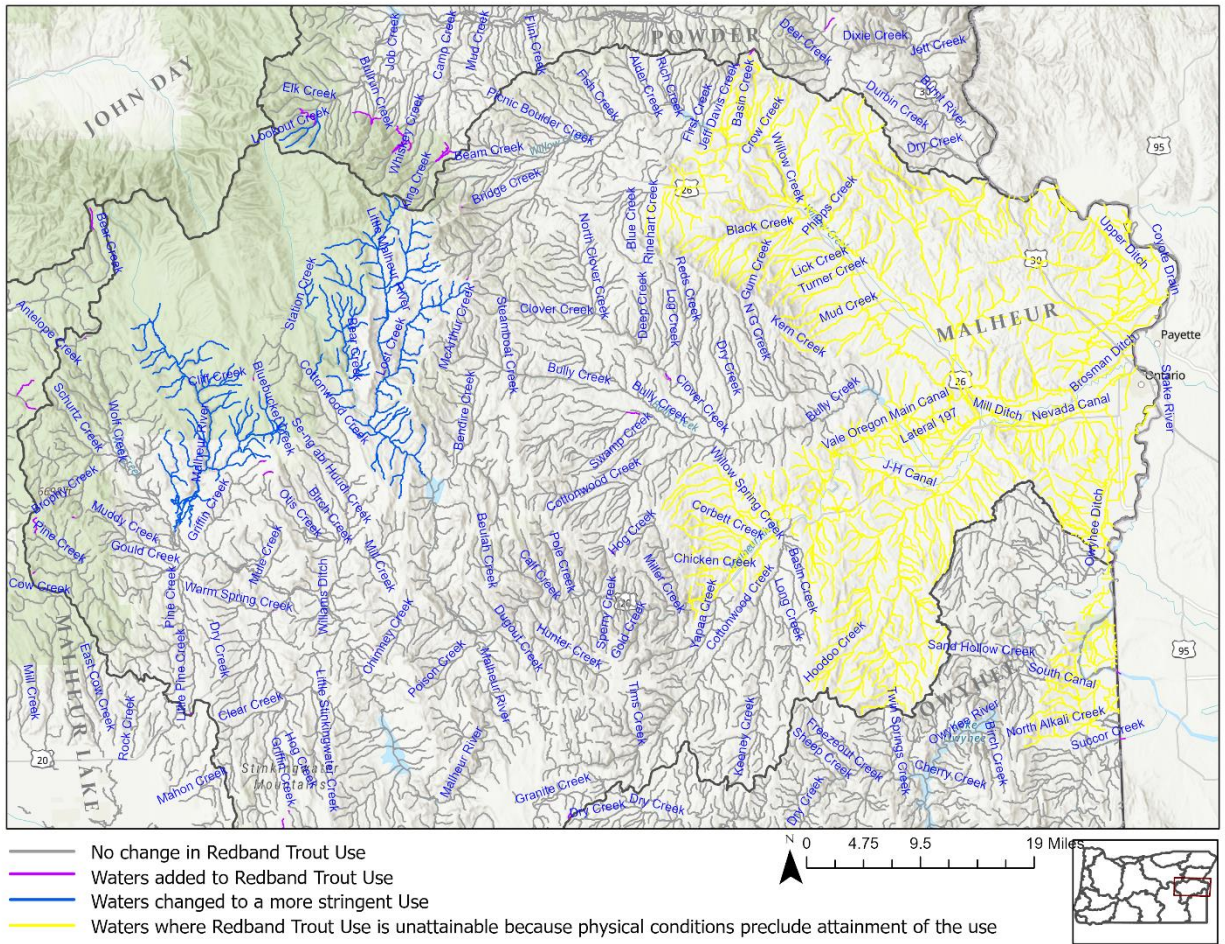


Figure E-4. Waters where Redband Trout Use is unattainable due to physical conditions, Malheur River and Owyhee Basins.

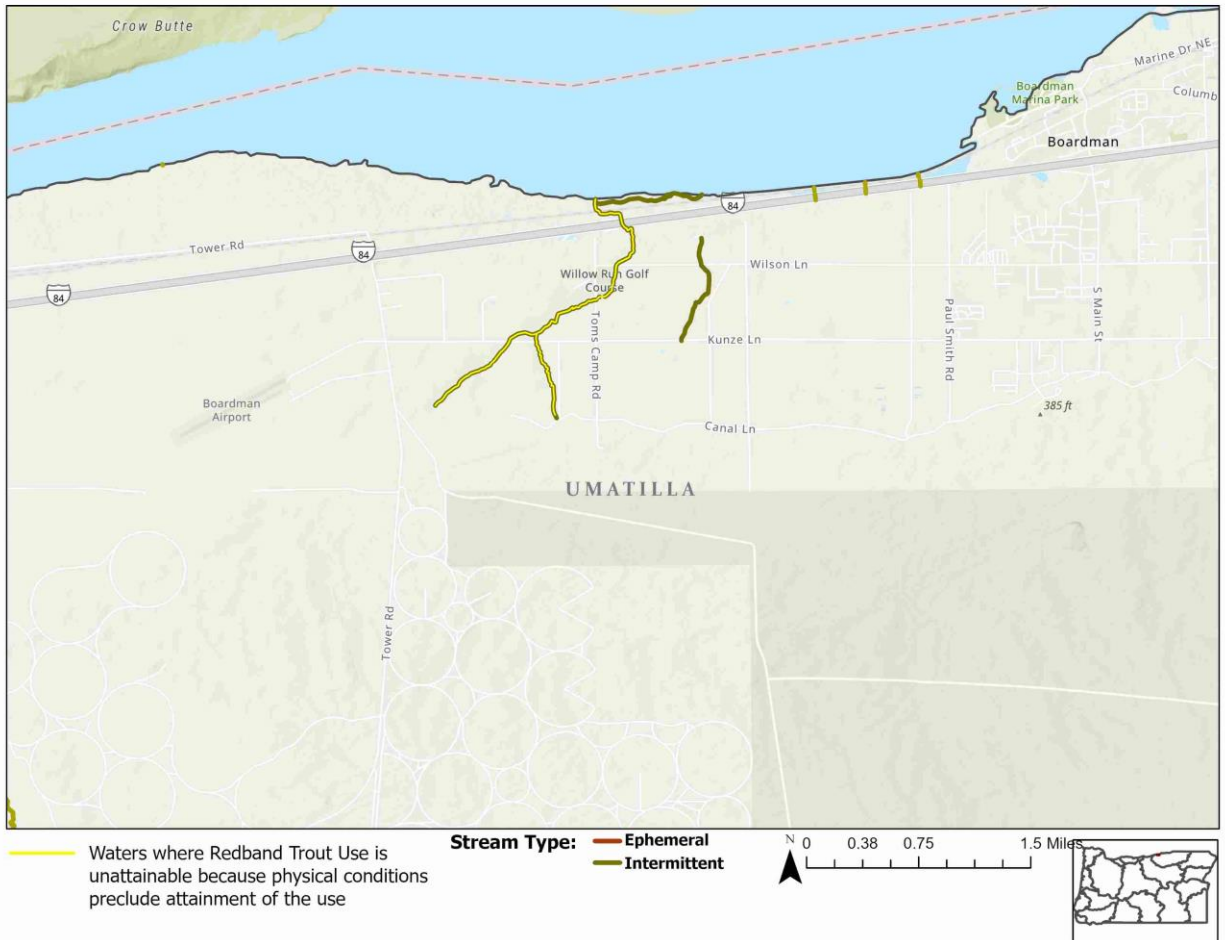


Figure E-5. Waters where Redband Trout Use is unattainable due to dams, diversions and other hydrologic modifications, Umatilla Basin.

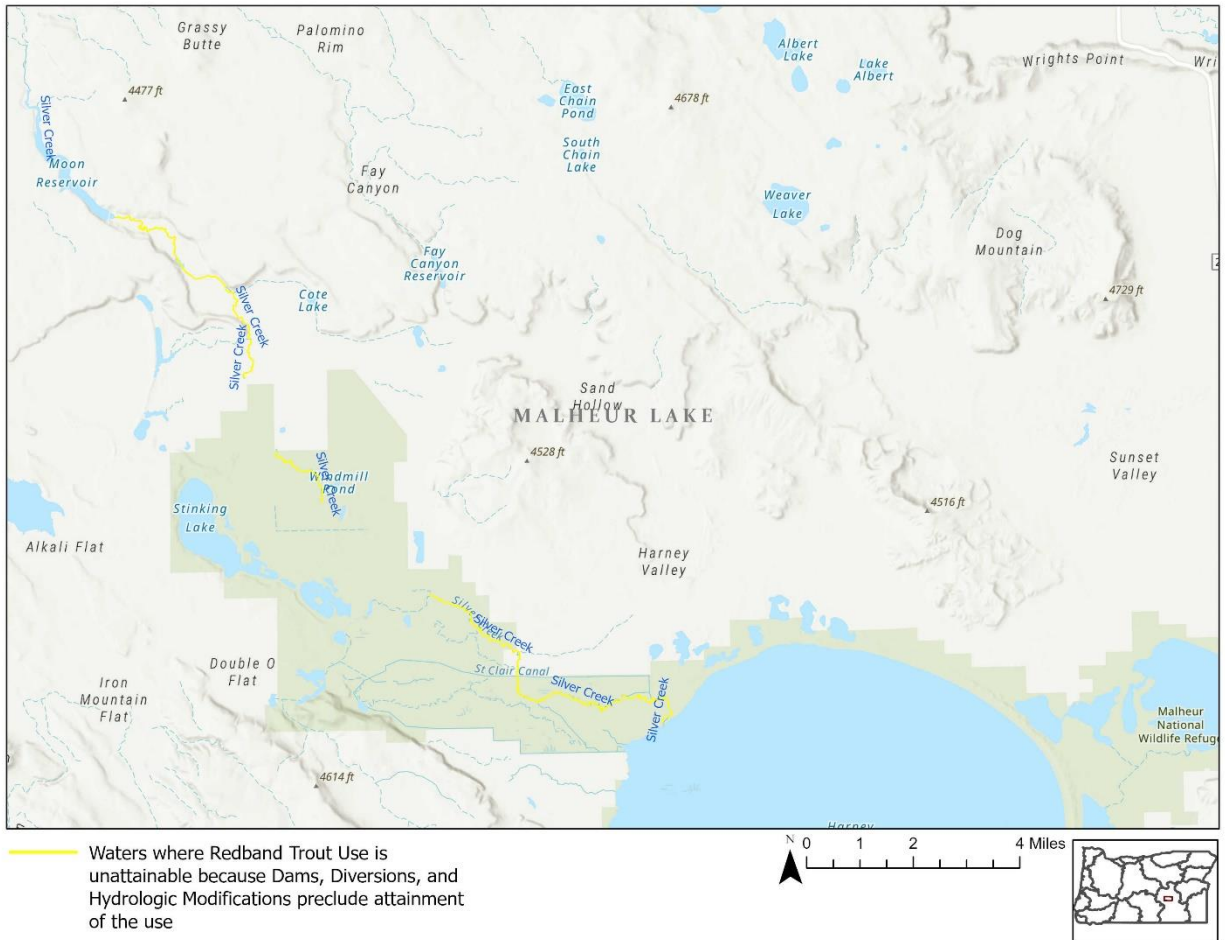


Figure E-6. Waters where Redband Trout Use is unattainable due to dams, diversions and other hydrologic modifications, Malheur Lakes Basin.

Translation or other formats

[Español](#) | [한국어](#) | [繁體中文](#) | [Русский](#) | [Tiếng Việt](#) | [العربية](#)
 800-452-4011 | TTY: 711 | deqinfo@deq.oregon.gov

Non-discrimination statement

DEQ does not discriminate on the basis of race, color, national origin, disability, age or sex in administration of its programs or activities. Visit DEQ's [Civil Rights and Environmental Justice page](#).