

LAN

10/100 Base-T
Single Port Transformer Module

8447-8450



- Exceeds IEEE 802.3 and ANSI X3.263 including

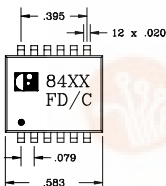
350 μ H OCL with 1 mA Bias

- Ideal for Pick & Place

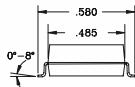
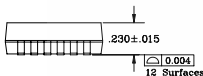
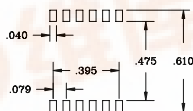
查询"8447"供应商



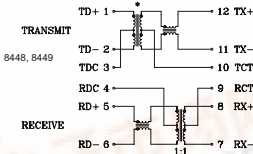
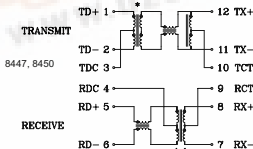
MECHANICAL AND SCHEMATIC (All dimensions in inches)



SUGGESTED PAD LAYOUT



SCHEMATICS



* REFER TO ELECTRICAL SPECIFICATIONS CHART FOR TURNS RATIO

UNLESS OTHERWISE SPECIFIED, ALL TOLERANCES ARE ± 0.010

ELECTRICAL SPECIFICATION @ 25°C

Part Number	Transmit Turns Ratio	Insertion Loss (dB MAX)	Return Loss XMIT (dB MIN)						Differential to Common Mode Rejection (dB TYP)				Crosstalk (dB MIN)				Hipot (Vrms)
			100kHz - 100MHz	1-30 MHz	40 MHz	50 MHz	60-80 MHz	30 MHz	60 MHz	100 MHz	200 MHz	1 MHz	30 MHz	60 MHz	100 MHz		
8447	1CT:1CT	1.2	-16	-14	-13	-12	-59	-49	-42	-37	-60	-40	-40	-35	1500		
8448	1CT:1CT	1.2	-16	-14	-13	-12	-55	-45	-38	-33	-60	-40	-40	-35	1500		
8449	2CT:1CT	1.2	-16	-14	-13	-12	-55	-45	-38	-23	-60	-40	-40	-35	1500		
8450	1CT:2CT	1.2	-16	-14	-13	-12	-59	-49	-42	-37	-60	-40	-40	-35	1500		

8447 and 8450 includes the Auto Transformer.

ISSUE: A 22/11/02 8447-8450



找PDF



pdf.dzsc.com

229 Colonnade Road, Ottawa, Ontario, Canada K2E 7K3
Tel: (613) 226-1626 Fax: (613) 226-7124 www.filtran.com